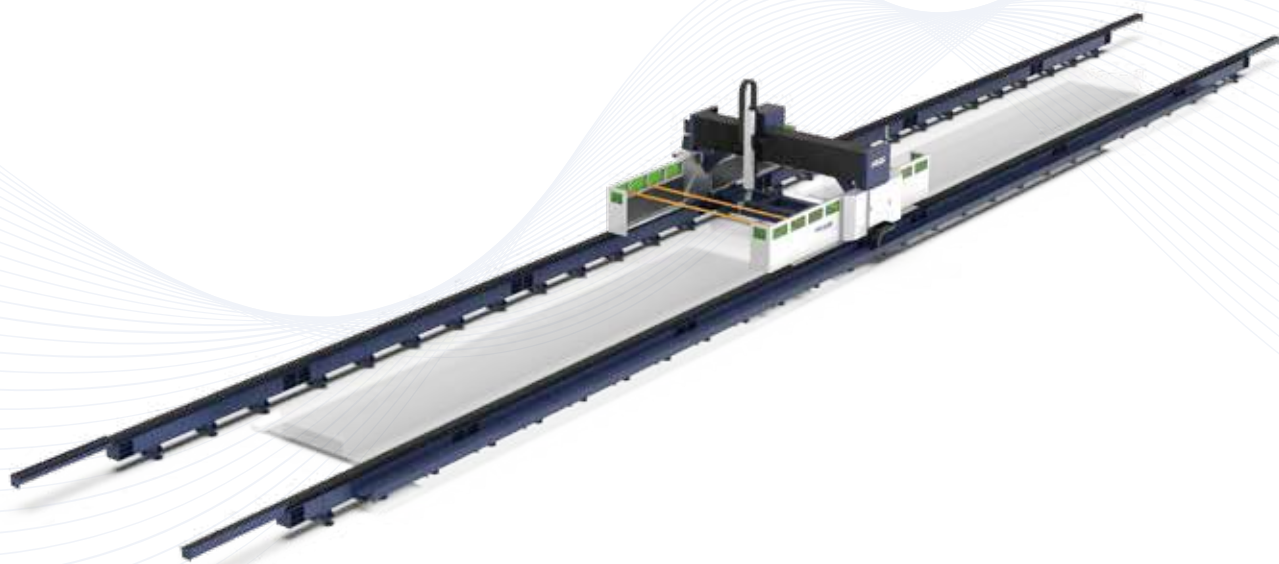




Cutting | Bending | Welding | Automation



PR1500B

Specific Sheet Fiber Laser Cutting Machine for
the Steel Structure Industry

Company Culture

MISSION

Intelligent manufacturing changes future

VALUES

Customer-focused and employee-based

VISION

Become a respectable enterprise in the global metal forming equipment field

Company Profile



19

Global Branches



100+

Countries Covered



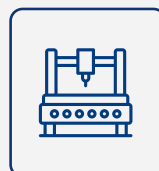
4

Manufacturing Bases



30+

Global Service Centers



8,000+

Annual Capability



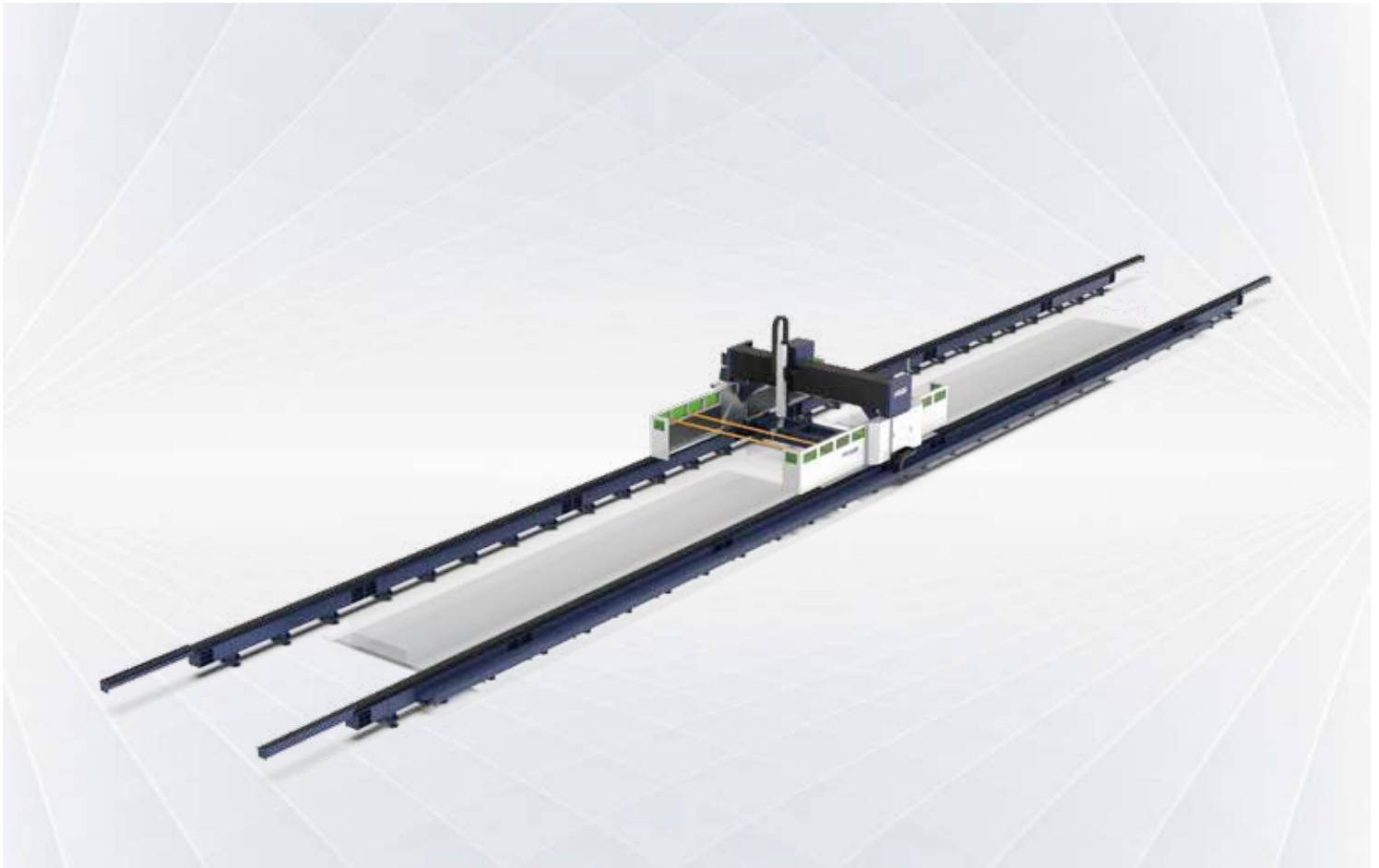
135,000m²

Occupied Area



PR1500B 12000-20000W

Specific Sheet Fiber Laser Cutting Machine for the Steel Structure Industry

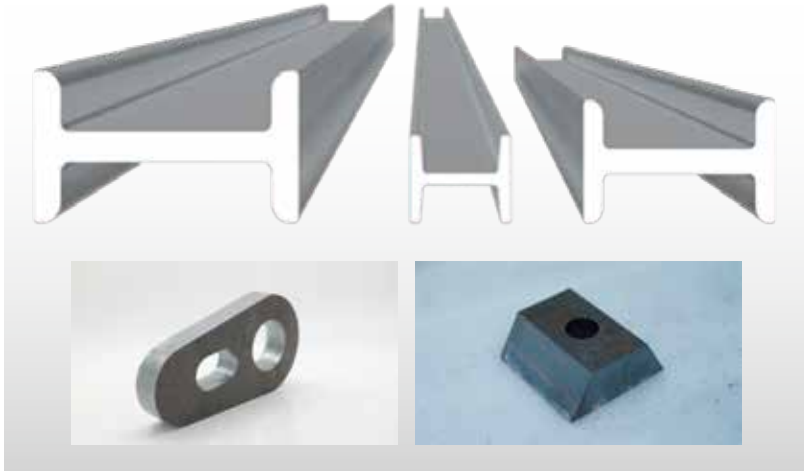


Technical Parameters

Technical Parameters	PR1500B
Power	12000W-20000W
Processing format (L*W)	Sheet Metal: 28000*3000mm Beveling Processing: 27000*2500mm Section Steel: 12100*1500*500mm
X/Y-axis positioning accuracy	±0.15mm/m
X/Y-axis repositioning accuracy	±0.1mm
Max. Linkage Speed	80m/min
Max. Linkage Acceleration	0.5G

*Note: the workbench is optional.

* Machine appearance, technical parameters, function description, data comparison shown in this page are from HSG in-house laboratory. All testing results and experimental data shall be subject to real machine.



▶ **Three-in-one cutting mode:
Sheet Metal Cutting
Section Steel Cutting
Beveling Processing**

- Equipped with multiple cutting modes, PR1500B Series can fully meet the demands of corresponding straight cutting and beveling processing for sheet and section steels.

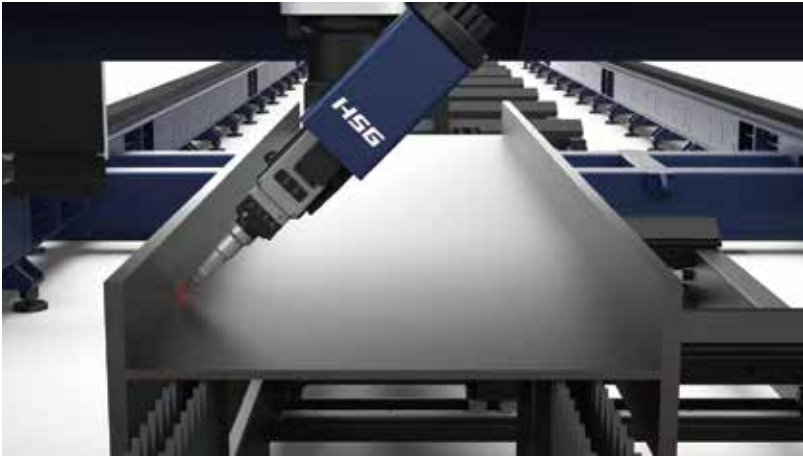
▶ **Multiple Safety Protection**

- There are protective sheet metal on both sides of the beam, effectively blocking the splashing of cutting sparks.
- Equipped with anti-burning plates, PR1500B Series can offer heat protection without heat damage worry.
- The safety protection glass on both sides allows for real-time observation of cutting conditions while providing protection.



▶ **Extra large-format requirements**

- Adopting independent modular design, single station (14m) and double station (28m) can be selected to meet the cutting Extra Large-format Design of different metal material combinations.
- The extra wide machine bed allows to be used for the beveling processing of 2.5m wide sheet metal.



One-Stop Specialized Solutions For Section Steel Cutting

- Real-time measurement and compensation of section steel workpieces and drawings will be done through coarse positioning + fine positioning. The nesting software for the PR1500B series has strong compatibility with Tekla, users can enjoy intelligent control system through simple operations.

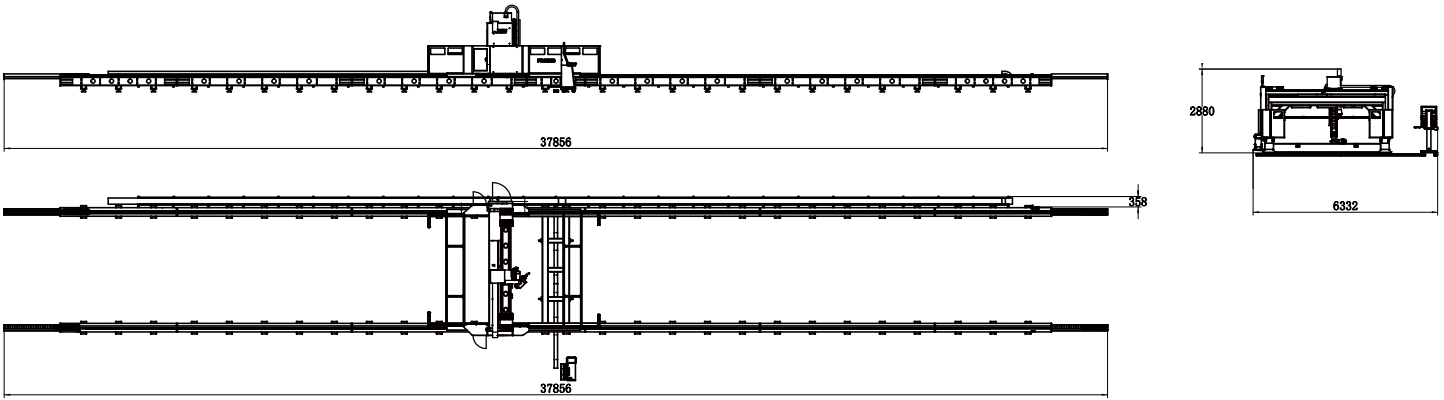


High-efficient Cutting Processing

- The new generation of lightweight beam design, a maximum linkage speed up to 80m/min, has higher processing efficiency compared to conventional formats.

Machine Foundation

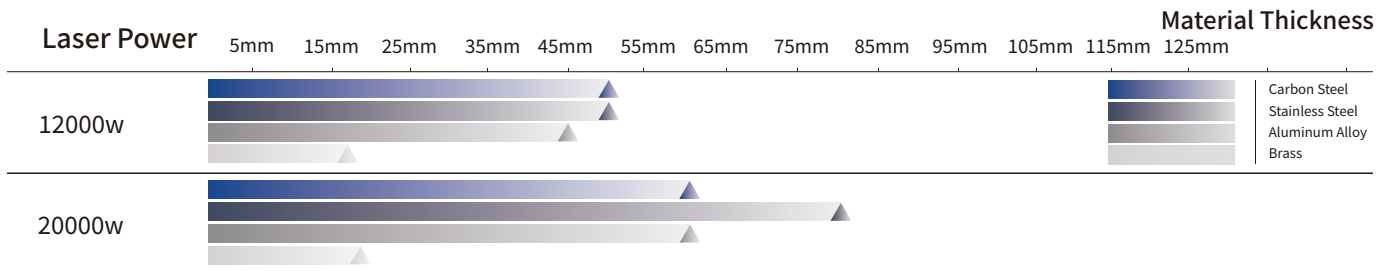
*The marked size has about 10mm error



Cutting Samples



Cutting Capacity



The actual machines shall prevail and above data & pictures are only for reference.



Intelligent Manufacturing Changes Future



As a global enterprise, HSG sticks to providing professional and convenient service support to customers at home and board



Professional Training

Multiple technical training service and free operation training for customers and dealers in time



Efficient Support

Humanistic service model, online services and 7*24 hotline to offer solutions and assistance



Optimized Transport

Multi-channel transport solutions and professional transport solution team will provide various transport cases for to satisfy the demand of customers and save transports fees



Sufficient Accessories

Highly efficient accessories delivery service, multiple network inventory jointly responds to accessories demand to shorten customer's waiting times and accelerate production



Careful Services

Domestic door-to-door service and free proofing, global 100+dealers provide efficient and convenient services



Intelligent Manufacturing Changes Future



Website



Facebook



Youtube

Headquarters Add.: No. 4, Anye Road, Shunjiang Community Industrial Park,
Beijiao Town, Shunde District, Foshan, Guangdong, China
Website: www.hsglaser.com
Email: info@hsglaser.com
Tel: +86 757-66833906